

# **EventScope Museum Interfaces Manual: Kiosk Viewer v. 5.4 Wide-Angle Viewer v. 5.4**

**The EventScope Team  
[www.eventscope.org](http://www.eventscope.org)  
Updated: March 22, 2005**

## **About This Manual**

Welcome to the EventScope Museum Interfaces v. 5.4 Manual. This document will introduce you to the basic functionality of the EventScope Kiosk Viewer and EventScope Wide-Angle Viewer, allowing you to download and show current content. For further information on the EventScope project and to download other EventScope software and content, please visit the EventScope website.

<http://www.eventscope.org>

The EventScope Team

## About the EventScope Museum Interfaces

The EventScope Museum Interfaces bring the power of the EventScope Viewer to the museum setting through a simplified interface designed for easy, “walk-up-and-use” exploration.

Functionally, these two interfaces are the same. Unless otherwise specified, these instructions in this manual apply to both the Kiosk Viewer and the Wide-Angle Viewer.

### EventScope Kiosk Viewer

The Kiosk Viewer is intended for display in interactive kiosks with standard computer displays (including CRTs, LCDs, plasma displays, projectors and touch screens). Generally, all that is needed for the user interface is a pointer with one or two buttons (mouse, trackball, trackpad, or touchscreen, for instance). To perform administrative tasks such as updating the content, a keyboard will also be needed.

### EventScope Wide-Angle Viewer

The Wide-Angle Viewer is built for use with an Elumens VisionStation, a 3D immersive viewing system that looks like this [image courtesy Elumens]:



Though the interface looks similar to the Kiosk Viewer, the Wide-Angle Viewer has been adjusted to look good when projected on the curved surface of the VisionStation. For more information about the

VisionStation, please visit the Elumens website at <http://www.elumens.com>.

Again, all that is needed for general user input is a pointer with one or two buttons (mouse, trackball, trackpad, or touchscreen, for example). A keyboard will be needed for administrative tasks.

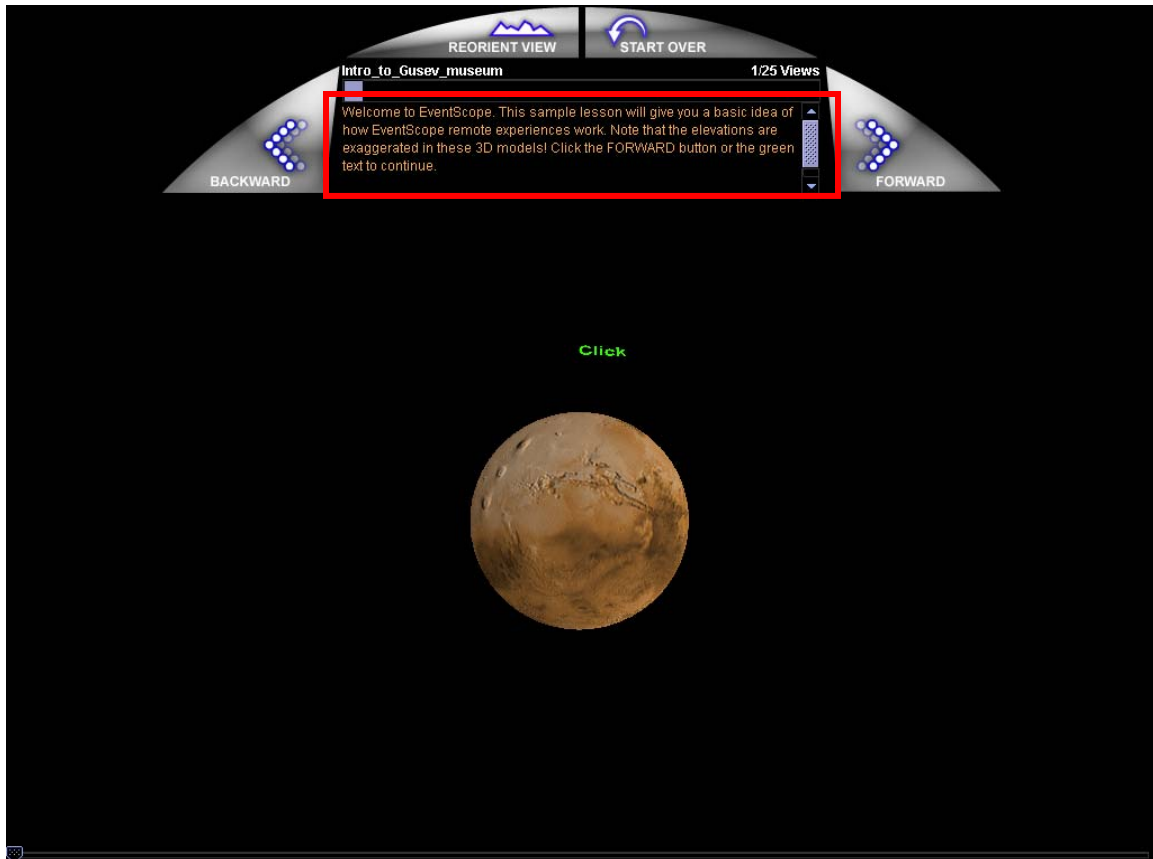
## **Terms**

**PSE** – Remote Experience Files are called PSEs (files that end in “.pse”). These are files that contain EventScope content (modules, lessons, etc).

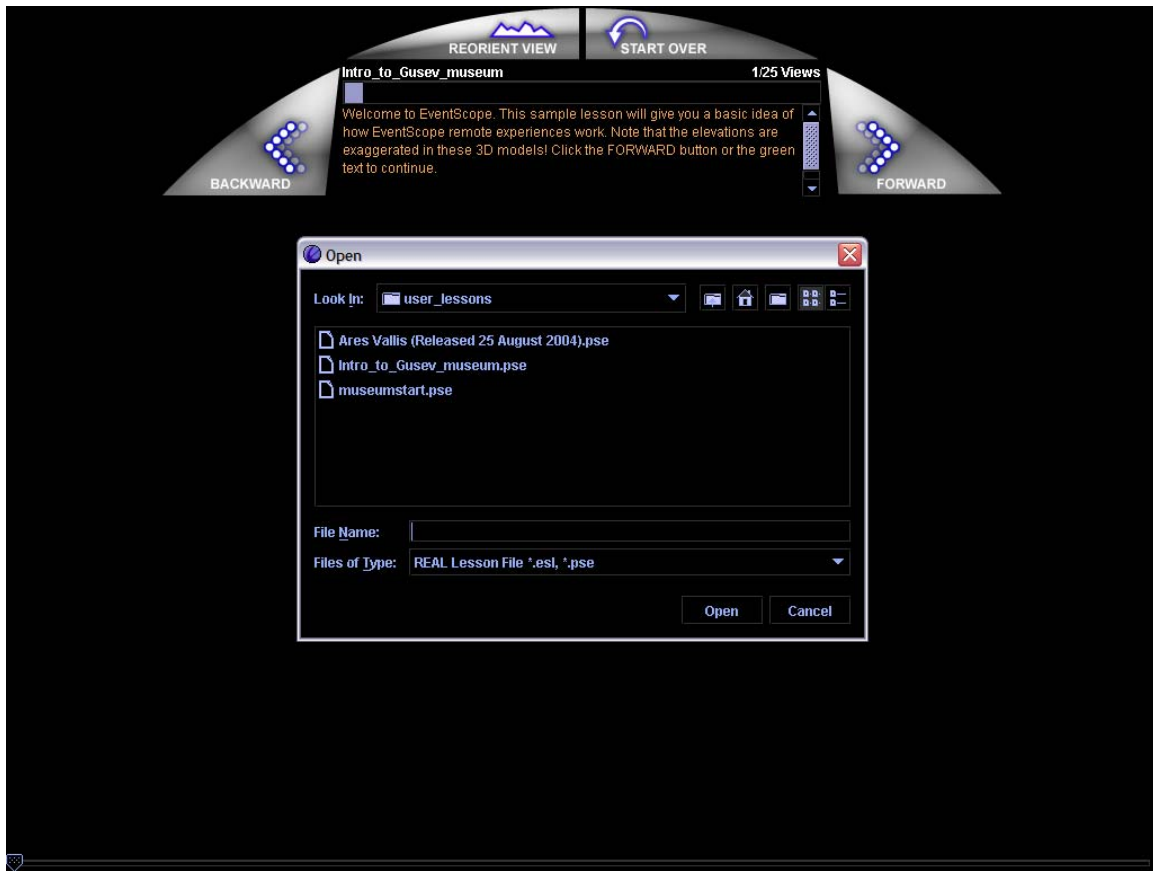
**RDL** – The Remote Download Location (RDL) serves as an online repository of EventScope PSEs. Any EventScope program, including the Kiosk Viewer and Wide-Angle Viewer, can be used to access the RDL via the internet and download any PSEs available.

## Opening a PSE

To open a PSE in the Wide-Angle Viewer, first click once on the text area near the top (inside the red box in this screenshot).



Next, press Ctrl-"O" on your keyboard. The Open dialog box will appear, as shown in this screenshot.

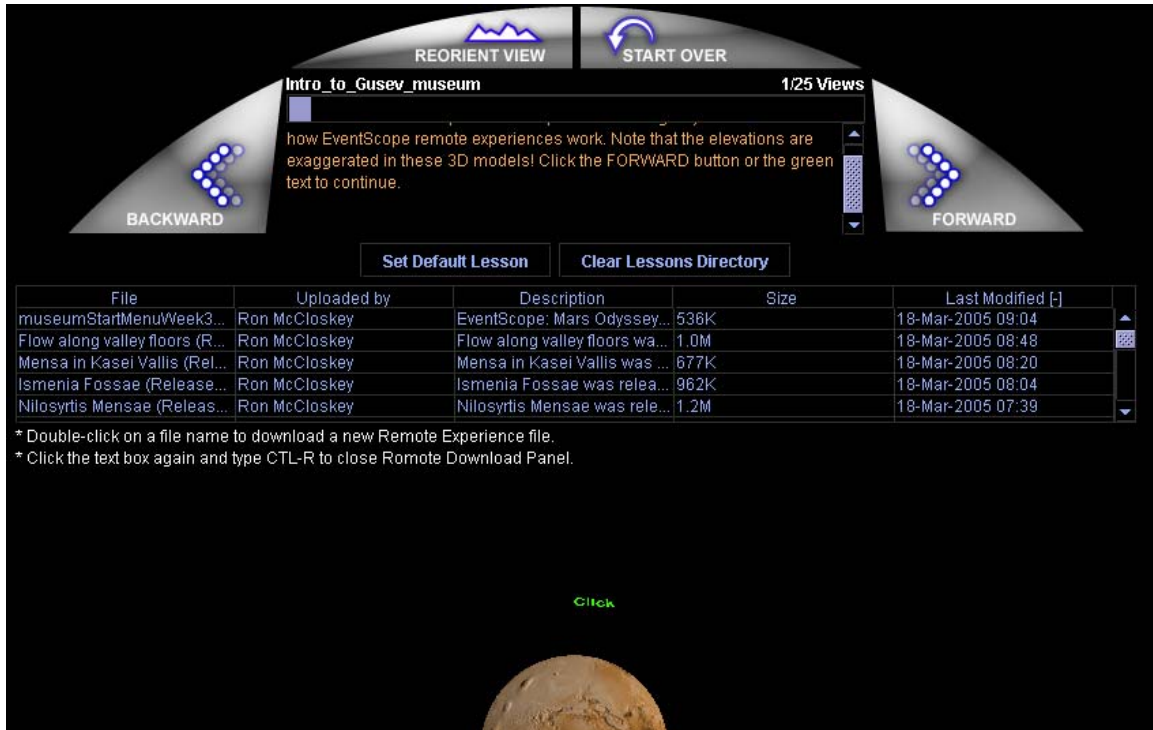


Select the PSE that you wish to open, and click the “Open” button. The PSE will open.

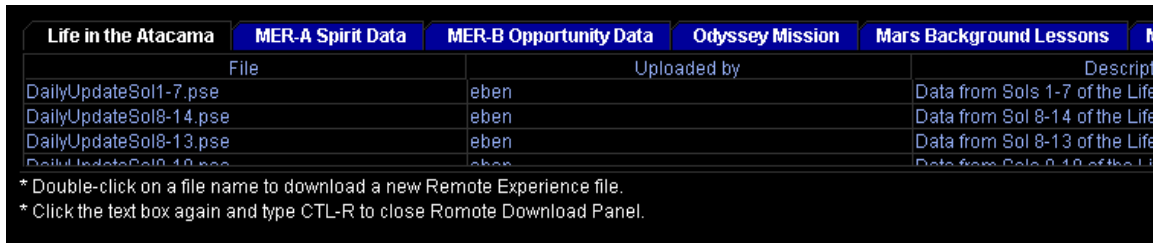
**Note:** The Open dialog box will default to the “user\_lessons” folder, but you can navigate to any other folder you wish.

## Downloading PSEs from the RDL

Click on the text area, as shown in the “Opening A PSE” section. Then, press Ctrl-“R” on your keyboard. If your computer is connected to the internet, you will see a list of files available in the RDL.



**Note:** When using the Wide-Angle Viewer, the “Museum - Wide-Angle Viewer” RDL will appear. When using the Kiosk Viewer, the RDL will include a set of tabs enabling you to choose from a number of different sets of PSEs, as shown below.

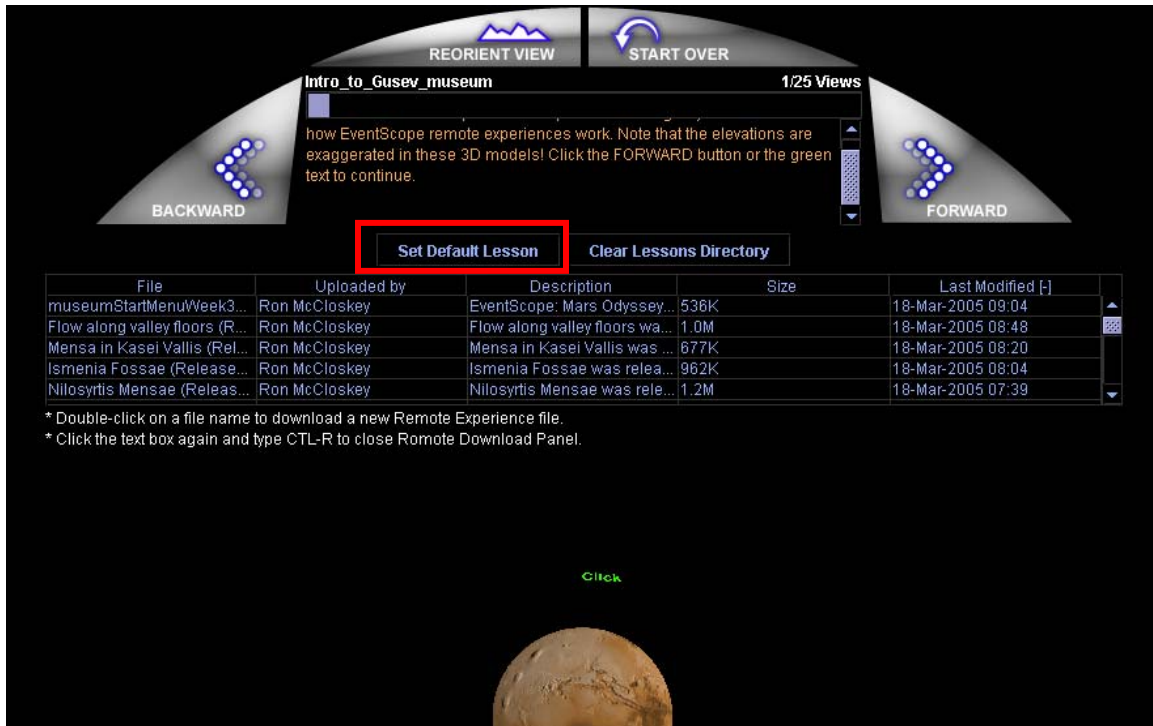


Double click on a lesson in the RDL to download and open it.

To close the RDL, click in the text area at the top, and then press Ctrl-“R” on your keyboard.

## Setting the Default Lesson

To change the default lesson (the lesson that automatically loads when you open EventScope), start by following the previous directions to open the RDL. Click the "Set Default Lesson" button, shown in this screenshot.

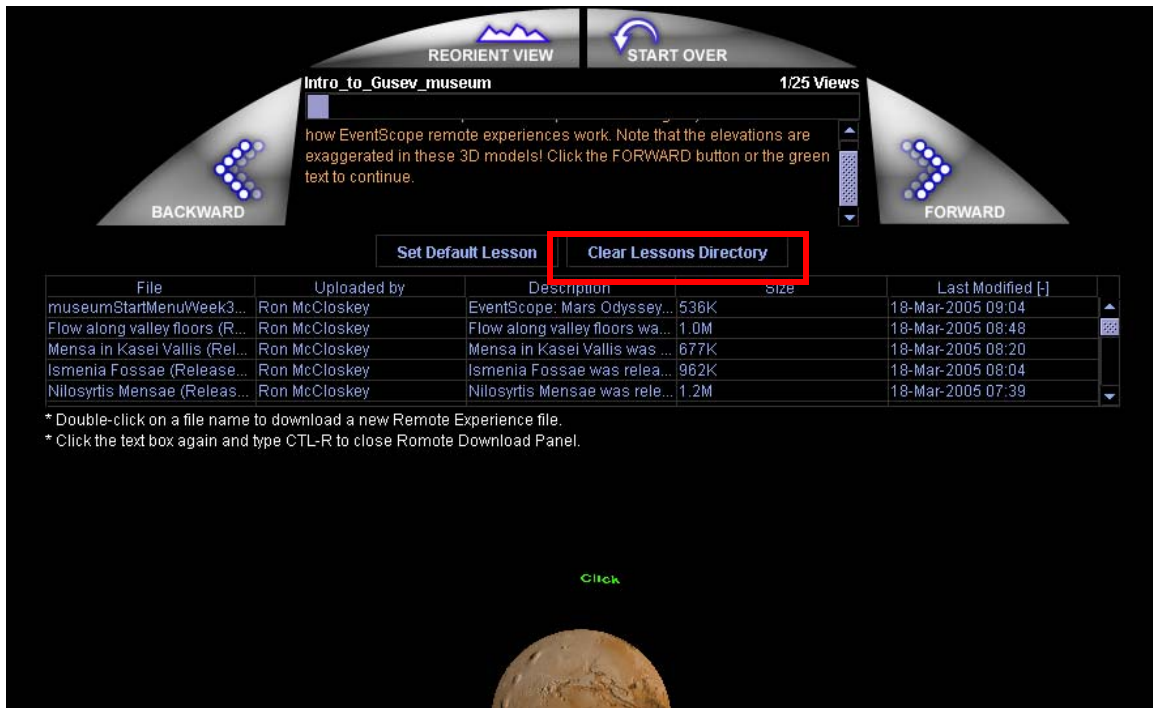


This will open the Select File dialog box. Choose the PSE you wish to set as the default lesson and click "Select File."

**Note:** The Select File dialog box will default to the "user\_lessons" folder, but you may navigate to any other folder you wish.

## Clearing the Lessons Directory

Generally, clearing the Lessons directory is discouraged. However, there may be times when you want to delete all of the PSEs in the "user\_lessons" folder. To do this, open the RDL. Click on the "Clear Lessons Directory" button, shown in the screenshot below.



**Warning:** This will permanently delete all lessons in the "user\_lessons" directory.

## **Quitting the Program**

To quit the EventScope Wide-Angle Viewer, click in the text area and press Ctrl-“Q” on your keyboard.